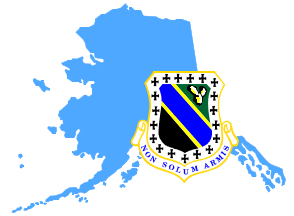


Comprehensive Site Evaluation Phase II Elmendorf Air Force Base, Alaska

September 2008



THE AIR FORCE

- Is dedicated to protecting human health and the environment by making munitions response areas safe to reuse.
- Is developing the Military Munitions Response Program by maximizing efficiencies and incorporating lessons learned from 20 years of environmental restoration experience.
- Will prioritize munitions response areas according to environmental, health, and safety considerations; current and future planned resource use; and site attributes.

Introduction

The Air Force developed the Comprehensive Site Evaluation as the initial munitions response action of its Military Munitions Response Program.

The goal of the evaluation is to obtain sufficient data to support Air Force officials in making informed decisions when managing munitions response areas based on current and projected future land uses. A munitions response area, or MRA, is an area where past military munitions activities have taken place. It does not include operational ranges.

The evaluation is conducted in two distinct phases. Phase I is similar to the preliminary assessment under the Comprehensive Environmental Response, Compensation, and Liability Act. It consists of historical record reviews, visual surveys and interviews.

Phase II of a comprehensive site evaluation is the equivalent of a CERCLA Site Inspection. This phase includes more extensive visual surveys and, based on site-specific conditions, may include geophysical mapping and munitions constituent sampling, which tests for explosive and non-explosive materials from military munitions. The Phase II Process is summarized in the flow chart below.

Elmendorf Air Force Base

Elmendorf Air Force Base is located two miles north of the city of Anchorage and is the largest Air Force installation in Alaska.

It is the home of the Headquarters, Alaskan Command, Alaskan NORAD Region, 11th Air Force and the 3rd Wing.



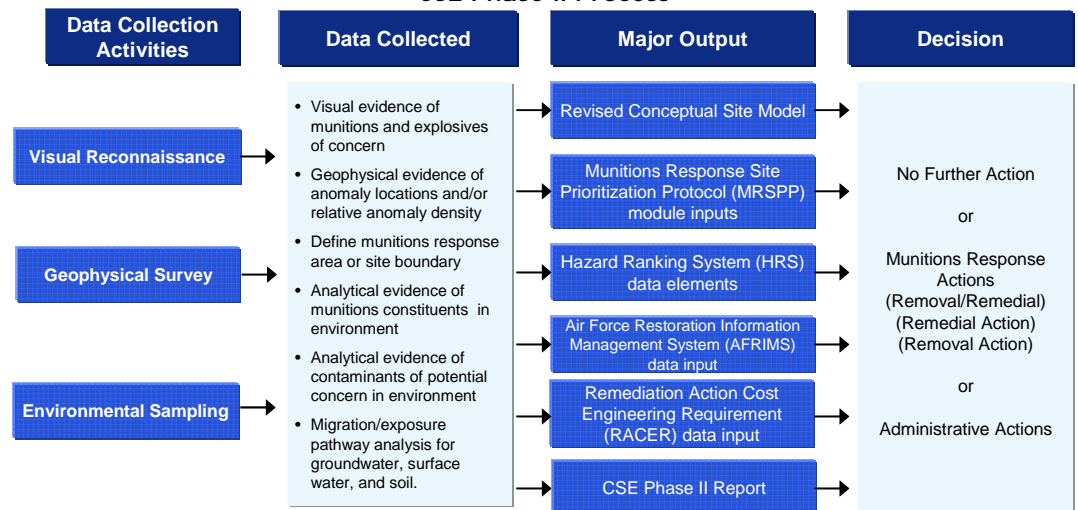
Elmendorf AFB Location

Phase I Actions

Under civilian contract, a team performed Phase I of a comprehensive site evaluation for Elmendorf AFB in 2006 and collected additional historical data in 2008. The investigation identified the following five munitions response areas:

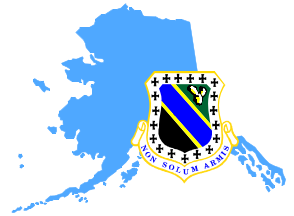
- B-26 Crash Site;
- Small Arms Range;
- Suspected Skeet Range;
- Susitna Gunnery Range; and
- Mortar Range 1A.

CSE Phase II Process



Comprehensive Site Evaluation Phase II Elmendorf Air Force Base, Alaska

September 2008



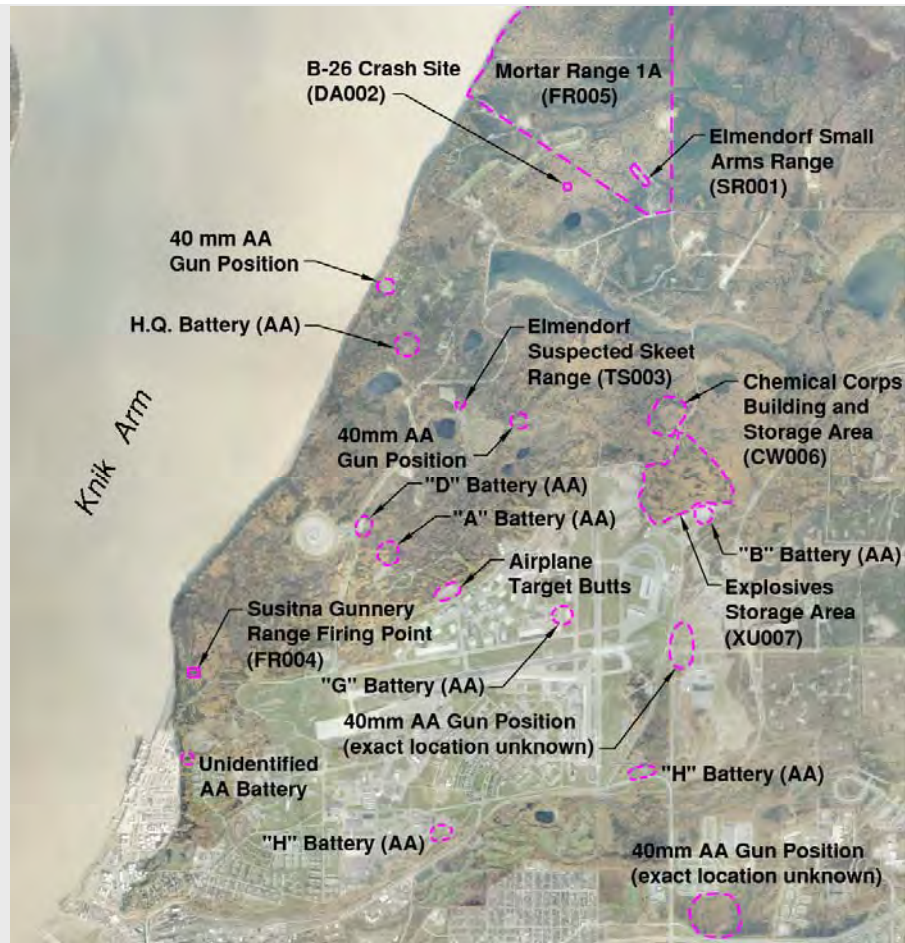
COMMON PROGRAM ABBREVIATIONS:

- AA: Anti-Aircraft
- CERCLA: Comprehensive Environmental Response, Compensation, and Liability Act
- CSE: Comprehensive Site Evaluation
- MMRP: Military Munitions Response Program
- MRA: Munitions Response Area
- MRSP: Munitions Response Site Prioritization Protocol

FOR MORE INFORMATION

The Air Force 3rd Wing Public Affairs Office, Environmental Restoration Community Relations Coordinator, Renee Wright, at:

Phone: 907-552-5756
E-mail: renee.wright@elmendorf.af.mil



Elmendorf AFB, Alaska MRAs and Potential MRAs

The investigation also identified six areas as potential munitions response areas:

- Former 40mm Gun Positions;
- Former Chemical Warfare Materiel Storage Area;
- Former Explosives Storage Area;
- Anti-Aircraft Batteries A, B, G, and H;
- The Anti-Aircraft battery west of the east-west runway; and
- The "Airplane Target Butts" on the north side of the east-west runway.

Phase II Actions

The Elmendorf AFB Comprehensive Site Evaluation Phase II fieldwork is scheduled for September 2008 at both the identified and potential munitions response areas. This fieldwork will consist of visual surveys, digital geophysical mapping, and soil sampling.

For the small arms ranges the investigation will also use an x-ray fluorescence analyzer to screen soils for lead, a common component of small arms ammunition.

After the field work is completed, the team will create a Comprehensive Site Evaluation Phase II report. It will include a conceptual site model and evaluation of potential exposure pathways to receptors for each munitions response area. The report will also determine each area's ranking based on the Munitions Response Site Prioritization Protocol. Response activities are to be based on the overall conditions at each location and consider various factors related to explosive safety and environmental hazards.

In the Air Force program, the munitions response area priority is one factor in determining the sequence in which munitions response actions are funded. As part of the stakeholder participation program at Elmendorf AFB, the Air Force will solicit public involvement in the scoring process.